

AECOM

PROJECT
BALLIEMEANOCH
PUMPED STORAGE
HYDRO
CLIENT
ILI (Borders PSH) Ltd.

CONSULTANT
 AECOM Limited
 177 Bothwell Street
 Glasgow, B2 7ER
 T +44(0)141 202 050

- LEGEND**
- Development Boundary
 - Invasive non-native species
 - Japanese knotweed, Dense
 - Japanese knotweed, Scattered
 - Rhododendron, Dense
 - Rhododendron, Scattered
 - Rhododendron and salmonberry mix, Scattered
 - Salmonberry, Scattered

NOTES

This figure only shows areas where Invasive Non-Native Species were recorded. Since none were recorded outside the Inveraray area, the parts of the Development elsewhere are not shown

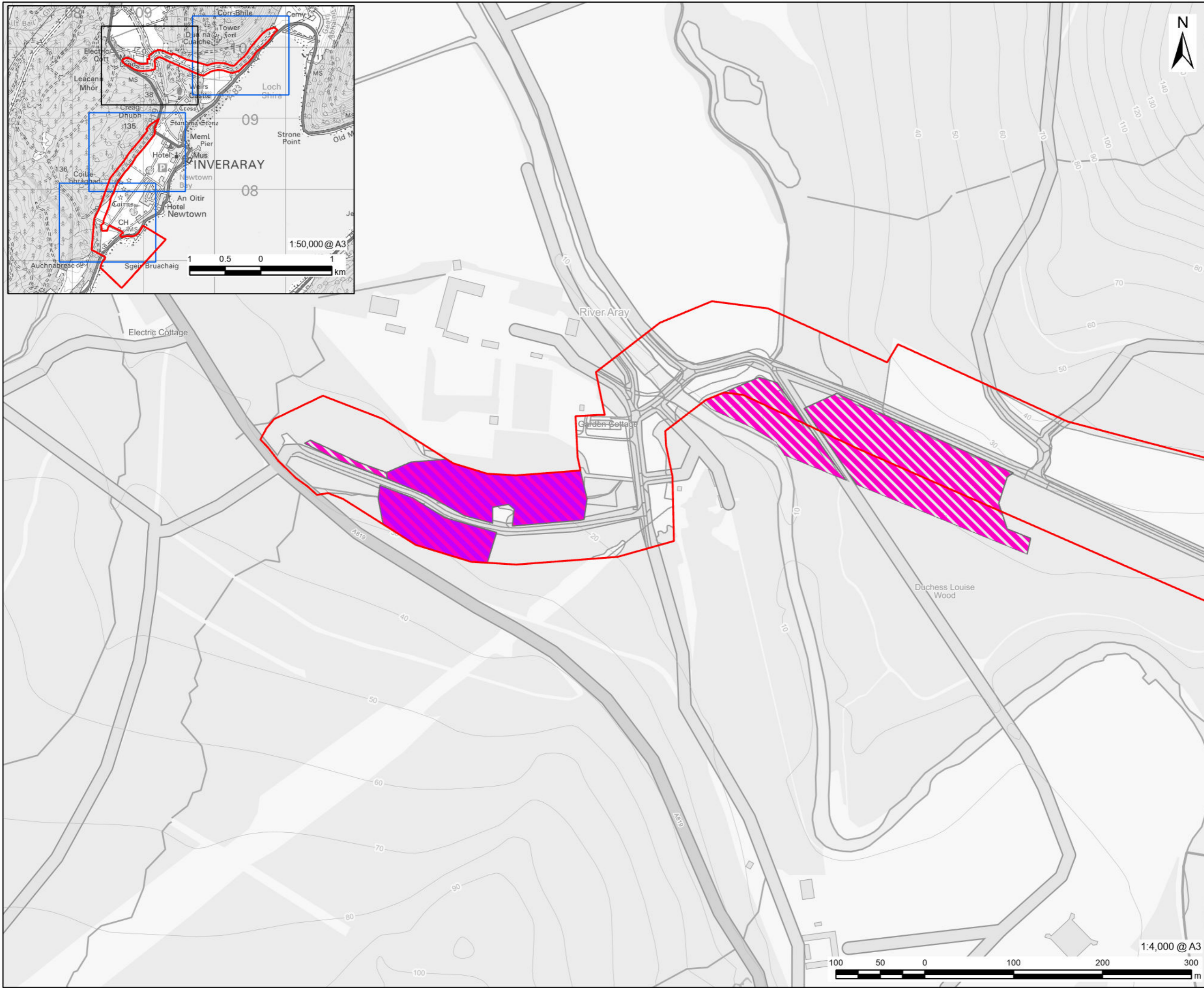
Reproduced from Ordnance Survey digital map data © Crown copyright 2024. All rights reserved. Licence number 0100031673..

ISSUE PURPOSE
 FINAL
PROJECT NUMBER
 60570241
FIGURE TITLE
 Invasive Non-Native Species
FIGURE NUMBER
 Figure 6.6 (Sheet 1 of 4)

1:4,000 @ A3



This drawing has been prepared for the use of AECOM's client. It may not be used, modified, reproduced or relied upon by third parties, except as agreed by AECOM or as required by law. AECOM accepts no responsibility, and denies any liability whatsoever, to any party that uses or relies on this drawing without AECOM's express written consent. Do not scale this document. All measurements must be obtained from the stated dimensions.



AECOM

PROJECT
BALLIEMEANOCH
PUMPED STORAGE
HYDRO

CLIENT
 ILI (Borders PSH) Ltd.

CONSULTANT
 AECOM Limited
 177 Bothwell Street
 Glasgow, B2 7ER
 T +44(0)141 202 050

- LEGEND**
- Development Boundary
 - Invasive non-native species
 - Japanese knotweed, Dense
 - Japanese knotweed, Scattered
 - Rhododendron, Dense
 - Rhododendron, Scattered
 - Rhododendron and salmonberry mix, Scattered
 - Salmonberry, Scattered

NOTES

This figure only shows areas where Invasive Non-Native Species were recorded. Since none were recorded outside the Inveraray area, the parts of the Development elsewhere are not shown

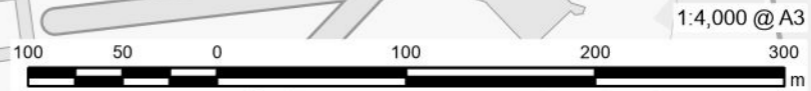
Reproduced from Ordnance Survey digital map data © Crown copyright 2024. All rights reserved. Licence number 0100031673..

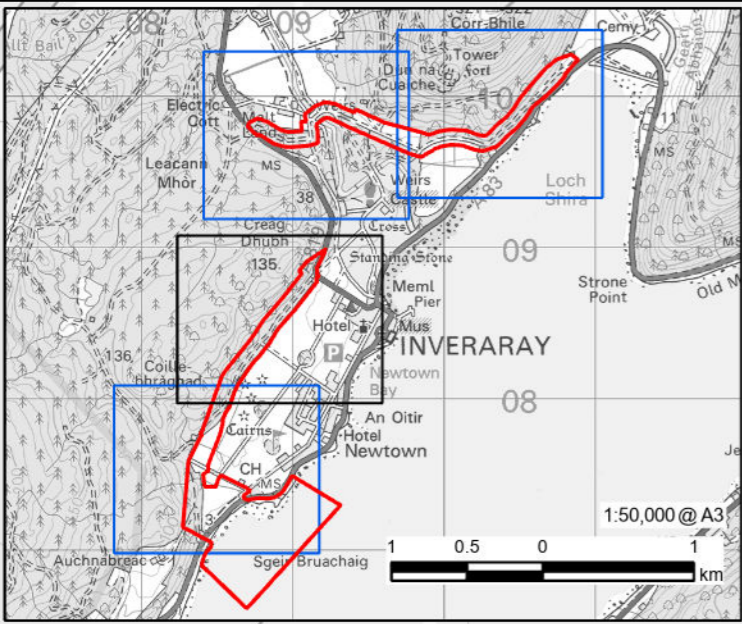
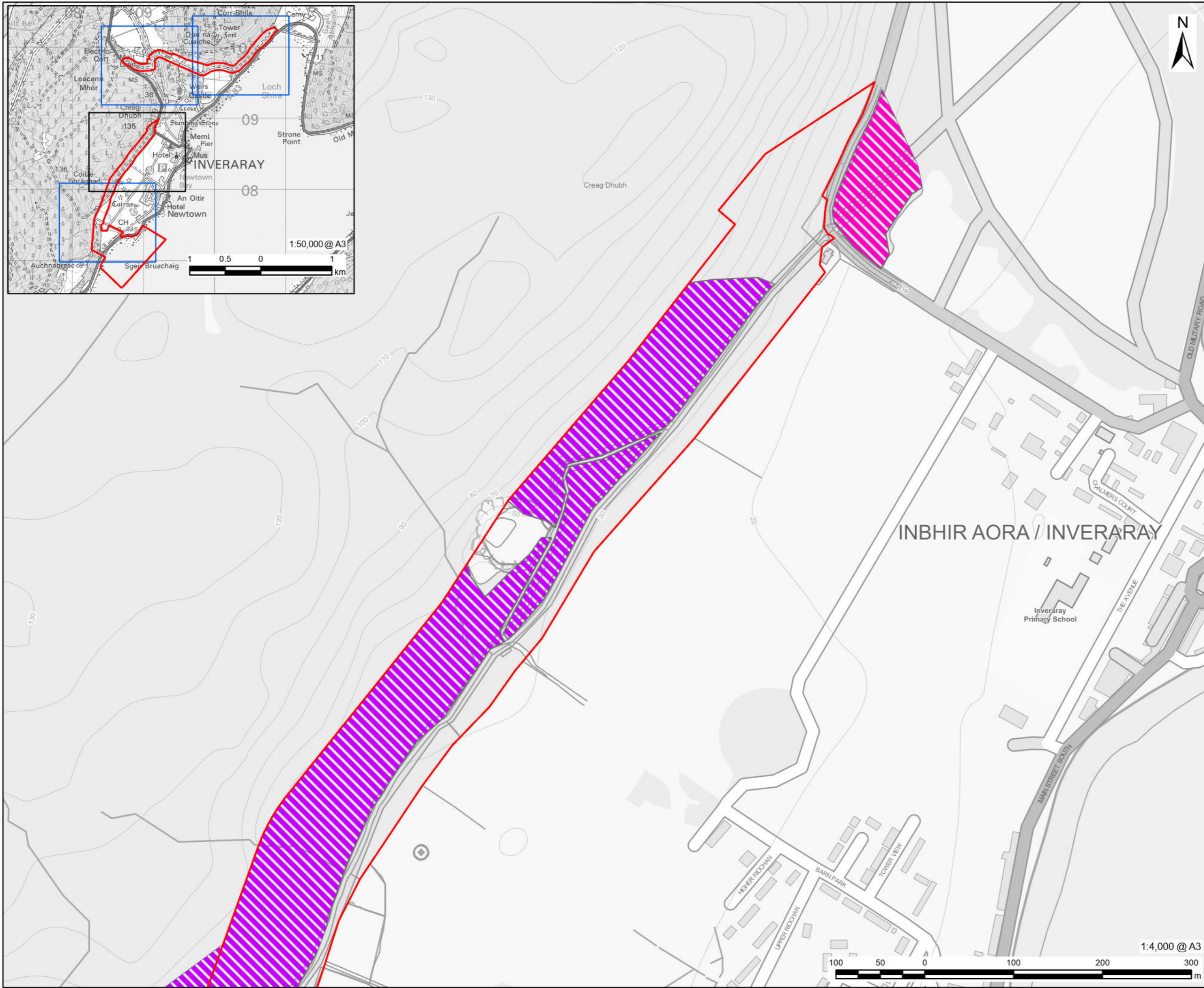
ISSUE PURPOSE
 FINAL

PROJECT NUMBER
 60570241

FIGURE TITLE
 Invasive Non-Native Species

FIGURE NUMBER
 Figure 6.6 (Sheet 2 of 4)





LEGEND

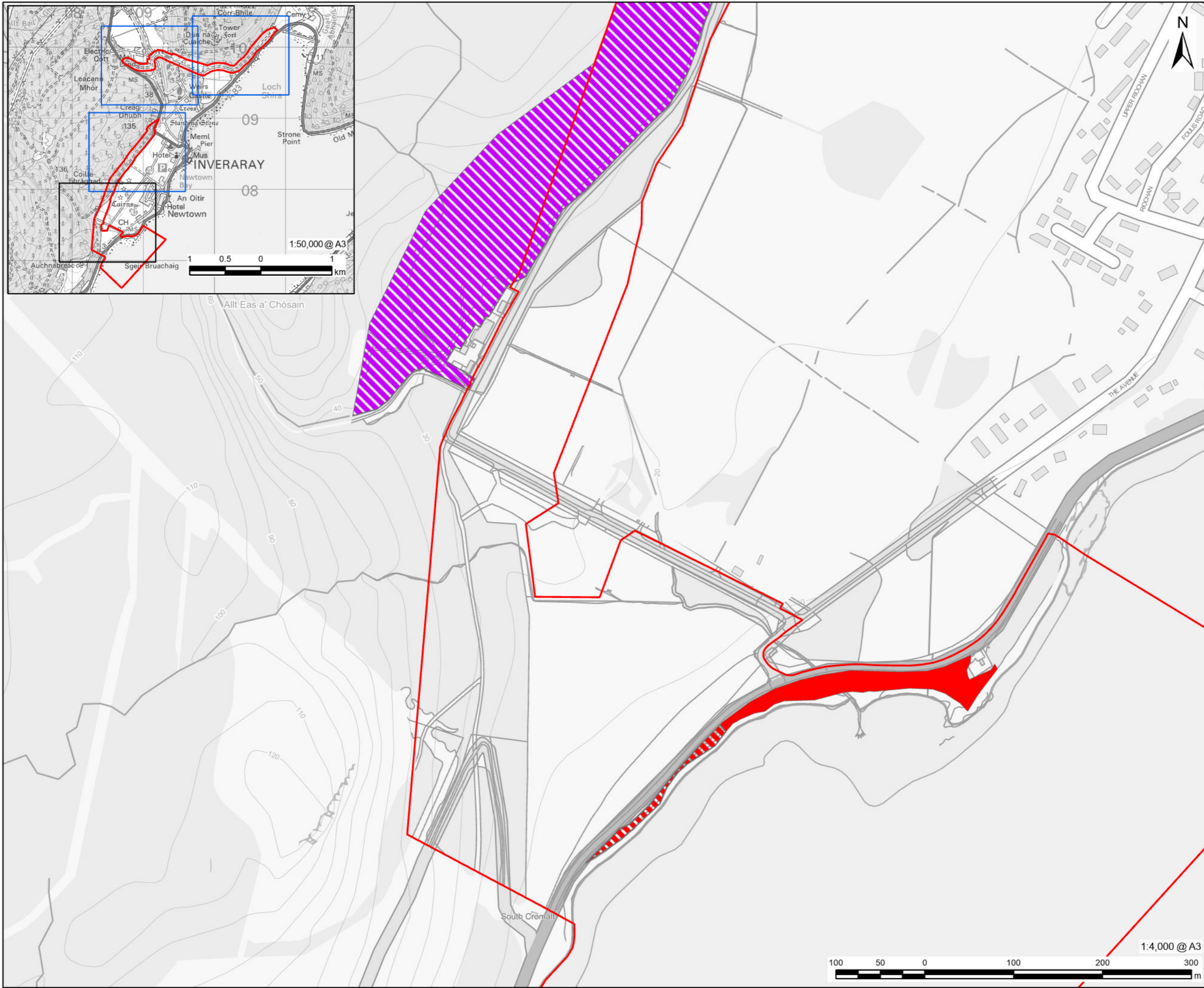
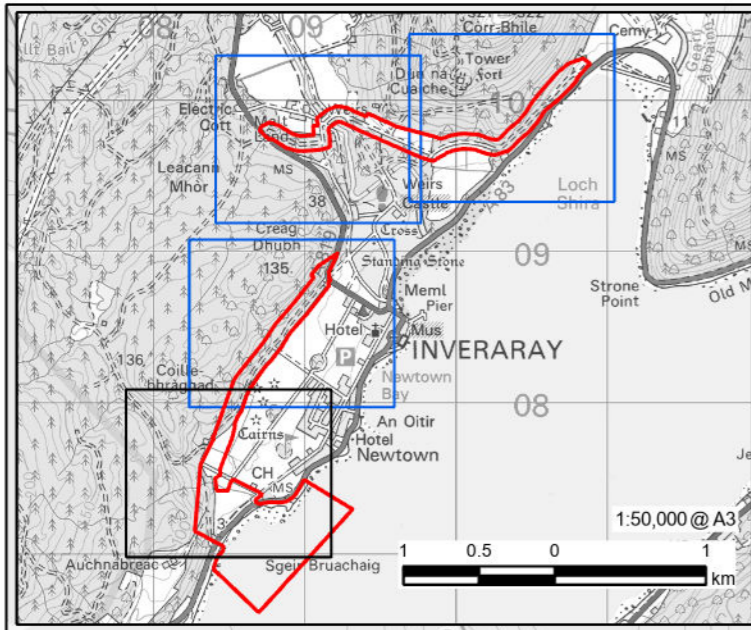
	Development Boundary
Invasive non-native species	
	Japanese knotweed, Dense
	Japanese knotweed, Scattered
	Rhododendron, Dense
	Rhododendron, Scattered
	Rhododendron and salmonberry mix, Scattered
	Salmonberry, Scattered

NOTES

This figure only shows areas where Invasive Non-Native Species were recorded. Since none were recorded outside the Inveraray area, the parts of the Development elsewhere are not shown

Reproduced from Ordnance Survey digital map data © Crown copyright 2024. All rights reserved. Licence number 0100031673..

This drawing has been prepared for the use of AECOM's client. It may not be used, modified, reproduced or relied upon by third parties, except as agreed by AECOM. AECOM accepts no responsibility, and denies any liability whatsoever, to any party that uses or relies on this drawing without AECOM's express written consent. Do not scale this document. All measurements must be obtained from the stated dimensions.



AECOM

PROJECT
BALLIEMEANOCH
PUMPED STORAGE
HYDRO
CLIENT
ILI (Borders PSH) Ltd.

CONSULTANT
 AECOM Limited
 177 Bothwell Street
 Glasgow, B2 7ER
 T +44(0)141 202 050

- LEGEND**
- Development Boundary
 - Invasive non-native species
 - Japanese knotweed, Dense
 - Japanese knotweed, Scattered
 - Rhododendron, Dense
 - Rhododendron, Scattered
 - Rhododendron and salmonberry mix, Scattered
 - Salmonberry, Scattered

NOTES

This figure only shows areas where Invasive Non-Native Species were recorded. Since none were recorded outside the Inveraray area, the parts of the Development elsewhere are not shown

Reproduced from Ordnance Survey digital map data © Crown copyright 2024. All rights reserved. Licence number 0100031673..

ISSUE PURPOSE
 FINAL
PROJECT NUMBER
 60570241
FIGURE TITLE
 Invasive Non-Native Species
FIGURE NUMBER
 Figure 6.6 (Sheet 4 of 4)

